

ACTIVATM BioACTIVE Bulk FlowTM

PULPDENT[®]

Next-generation, Self-leveling
Bioactive Bulk Fill

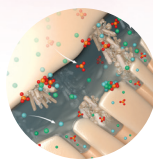


Natural Remineralization Support¹
Secondary Caries Protection²



Bulk-fill Ease & Efficiency

- Use as a dentin replacement, or bulk fill in one step³ (unlimited depth of cure⁴)
- Can be used with or without a capping layer
- Patented stress reduction monomer (MODULUSTM), best-in-class shrinkage stress rate⁵



Remineralization Support

- Fluoride, calcium, and phosphate release & recharge
- Defends against microleakage via mineral apatite formation²
- Biofilm modulation⁶



Universal Shade

- ShadeFusionTM technology replaces common VITA shades
- Optimal chroma and translucency, highly esthetic
- Simplifies inventory

Bulk Fill | Self-leveling | Fluoride, Calcium & Phosphate Release & Recharge
Dual Cure | Moisture Tolerant | BPA Free | Made in the USA

¹The remineralization process is a natural repair mechanism to restore the minerals again, in ionic forms, to the hydroxyapatite (HAP) crystal lattice. Source: Arifa MK, Ephraim R, Rajamani T. Recent advances in dental hard tissue remineralization: a review of literature. *Intl J Clin Ped Dent.* 2019;12(2):139. ²Activa Bioactive physically seals the margin of the material and tooth interface through mineral apatite formation, subsequently protecting against microleakage, the leading cause of secondary caries and recurrent decay. Scanning electron micrographs of the Activa Bioactive-Restorative groups showed a "thicker acid-base resistant hybrid-like layer with a distinct crystallization pattern." (Raghip AG, Comisi JC, Hamama HH, Mahmoud SH. In vitro elemental and micromorphological analysis of the resin-dentin interface of bioactive and bulk-fill composites. *Am J Dent.* 2023;36(1):3-7.) ³"One-step" describes placement after preparation, etching, and bonding steps. Refer to Activa Bioactive Bulk Flow instructions for use (IFU) for complete instructions. ⁴Dual-cure mode ⁵Fan Y, Hubler D, Choochaisaengrat S, Giordano II R. Polymerization Shrinkage Stress of Novel Light Curing Dental Composites. Poster presented at American Association for Dental, Oral, and Craniofacial Research Annual Meeting; March 12-15, 2025; New York, NY. ⁶See: Maher YA, Rajeh MT, Hamooda FA et al. Evaluation of the Clinical Impact and In Vitro Antibacterial Activities of Two Bioactive Restoratives against *S. mutans* ATCC 25175 in Class II Carious Restorations. *Nigerian Journal of Clinical Practice*, 2023;26(4):404-411. Mah J, Merritt J, Ferracane J. Adhesion of *S. mutans* biofilms on potentially antimicrobial dental composites. *J Dent Res.* 2017;96:2560.

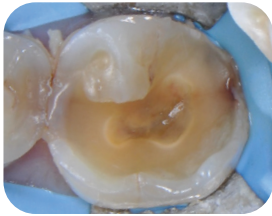
ACTIVATM
BioACTIVE

The Higher Standard of Care
www.pulpdent.com

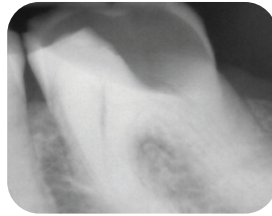
Bulk Fill Without Limits

The Ultimate Class II Solution

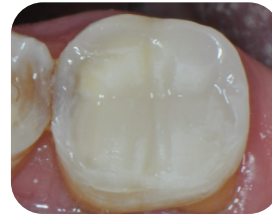
ACTIVA™ PULPDENT®
BioACTIVE Bulk Flow™



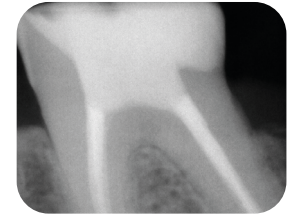
Pre-op



Pre-op radiograph



Post-op

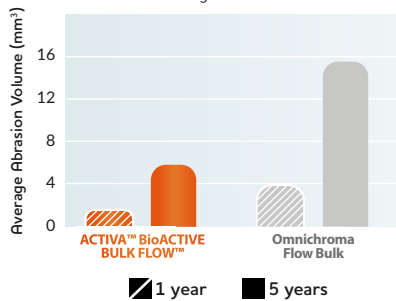


Post-op radiograph

Images courtesy of Dr. Raymond Zhu

Volume Wear

Chewing Simulation Test

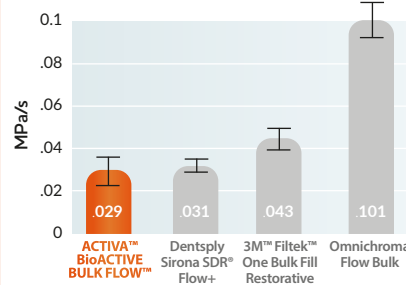


Source: Independent third-party testing (SD Mechantronik)
Disclaimer: Omnichroma Flow Bulk is not a trademark of Pulpdent.

EXCELLENT WEAR RESISTANCE

Superior physical properties allow for fewer instances where a capping layer may be required.

Max Stress Rate



Disclaimer: Dentsply Sirona SDR® Flow+, 3M™ Filtek™ One Bulk Fill Restorative, and Omnichroma Flow Bulk are not trademarks of Pulpdent.

BEST IN CLASS SHRINKAGE STRESS RATE⁵

Patented shrinkage stress reduction technology (MODULUS™) for worry-free bulk filling.

Powered by Patented SMART™ Technologies

MODULUS™
Elastomeric functional monomer

ION-X™
Hydrophilic ionic matrix

WetBond™
Moisture-tolerant acidic functional monomer

Physical Properties – Cure Time: Light cure - 10 sec. (high power), 20 sec. (med./low power); Self-cure - 3 min.
% Filler by Weight: 60% | Compressive Strength: 280 MPa | Flexural Strength: 110 MPa | Radiopacity: 200% Al

Order Today!

Scan the QR code below for additional product information.



LEARN
MORE

- VBF1US** Single Pack Kit: 5g syringe + 10 Automix tips, universal shade (ShadeFusion)
- VBF2US** Twin Pack Kit: 2 x 5g syringe + 20 Automix tips, universal shade (ShadeFusion)
- VKBF1US** Kids Single Kit: 5g syringe + 10 Automix tips, universal shade (ShadeFusion)
- VKBFS** Kids Twin Pack Kit: 2 x 5g syringe + 20 Automix tips, universal shade (ShadeFusion)
- VKBF1OW** Kids Single Kit: 5g syringe + 10 Automix tips, pediatric/opaque white shade
- T20G19** Automix tips, clear, with bendable 19-gauge metal cannula, pkg. of 20



Also available for kids! **ACTIVA kids BioACTIVE Bulk Flow™**